



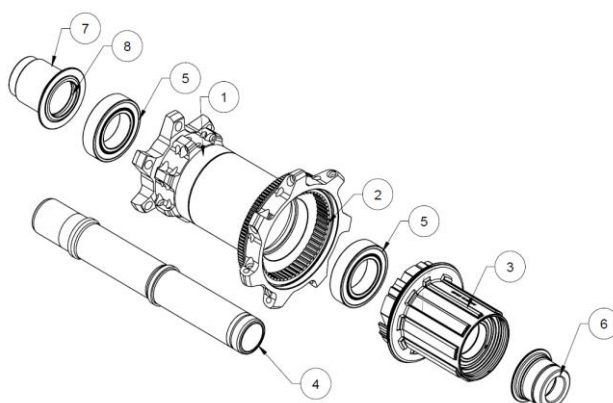
WHEEL SPECIFICATIONS

Line Pro 30 Rear TLR Disc 29 Boost



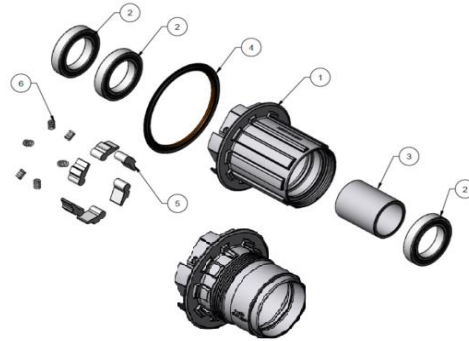
Wheel Components

TCG Part Number	Description
547406	Wheel
NA	Hub - 108T (OE use only, not available for aftermarket purchase)
W542790	Rim
W437773	Drive Side Spokes
W437773	Non-Drive Side Spokes
415761	Nipples
W439598	Tubeless Rim Strip
W527257	Tubeless Valve Stem



Hub Service Parts

Diagram Number	TCG Part Number	Description
1	NA	Hub Shell
2	W527053	Drivering
3	See Freehub Parts (below)	Freehub
4	W542541	Axle - Boost
5	432399	Ball Bearing 6903 30x17x7mm
6	552406	12mm End Cap (Drive Side)
7	552407	12mm End Cap (Non-Drive Side)
Not Shown	W562022	QR End Cap (Non-Drive Side conversion to 141x5mm)
Not Shown	W527033	QR End Cap (Drive Side conversion to 141x5mm with Shinano HG or SRAM XD)
Not Shown	W5255095	QR End Cap (Drive Side conversion to 141x5mm with Shinano Micro Spline)
Not Shown	W586894	Micro Spline 12mm End Cap (Drive Side)
8	Included w/End Cap	End Cap O-ring



Freehub Parts

Diagram Number	TCG Part Number	Description
1	552410	Shimano Compatible Freehub (includes Bearings, Spacer, and Freehub Seal)
	552411	SRAM XD Driver (includes Bearings, Spacer, and Freehub Seal)
Not Shown	600718	Shimano Micro Spline Freehub - requires Micro Spline-specific end cap (includes Bearings, Spacer, and Freehub Seal)
2	410428	Freehub Bearings
3	included w/freehub body	Freehub Bearing Spacer
4	included w/freehub body	Freehub Bearing Seal
5	552414	Pawls (3 pack, Freehub requires 1 kit for 54 points of engagement & 2 kits for 108)
6	552415	Springs (3 pack)

Wheel Building Information and Specifications

Value	Description or Specification
Wheel Building Information	
0.5	Hop (mm)
0.5	Wobble (mm)
NA	Wheel stress level right side up (degrees of rotation, measured on Bontrager Stressor)
NA	Wheel stress level left side up (degrees of rotation, measured on Bontrager Stressor)
1.0	Dish (mm) - Maximum gauge reading (First side rim to endcap minus second side rim to end cap)
195 lbs min, 325 lbs max OR 87 kgf min, 148 kgf max	Spoke tension - drive side
Lacing pattern non-disc side	3 cross, woven. First hole CCW from valve hole is a pushing spoke (viewed from the non-disc side).
Lacing pattern disc side	3 cross, woven. First hole CCW from valve hole is a pulling spoke (viewed from the disc side).
Size Specifications	
298mm	Spoke length drive
298mm	Spoke length non-drive
582mm	Rim ERD
30mm	Rim height
35.6mm	Rim outer width
28.5mm	Rim hook bead width
NA	Rim spoke offset
Other Specifications	
878g	Wheel weight
Black/Black/Black	Wheel color
Black	Hub color
Black	Spoke color
Black	Rim color
28	Spoke count
14/17G	Spoke gauge
6-Bolt	Disc bolt pattern
Yes	Tubeless ready