

孔數(C)	角度 A	角度 B
32	22.5	11.25
28	25.71	12.85



**FORMULA**  
**ENGINEERING INC**

DRAWING FILE	MST-148	STATE 已發行
DESCRIPTION	4SB Rear hub For Micro Spline	REV. 0

## FILE DESCRIPTION

## STATE DATE

2020/2/27 下午 04:47:34

## FINISH

Anodized

## MATERIAL

Assembly

## HEAT TREATMENT

-

## WEIGHT

393.23g

Revision Change

Basic Dimension

(XX.X) Reference Dimension

UNIT

MM

THIRD ANGLE PROJECTION

Revision Change

Basic Dimension

(XX.X) Reference Dimension

SHEET SCALE

1:1

SHEET

2 OF 3

DIMENSIONS  
ARE GIVEN IN  
MILLIMETERS  
UNLESS  
OTHERWISE  
STATED

X±0.5  
X.X±0.2  
X.XX±0.05  
ANGLES ±1/2°

## DESIGNER

Sinya Chang

## ENGINEERING

Alex Chang

## ENGINEERING MANAGER

Ted Wang

## DATE

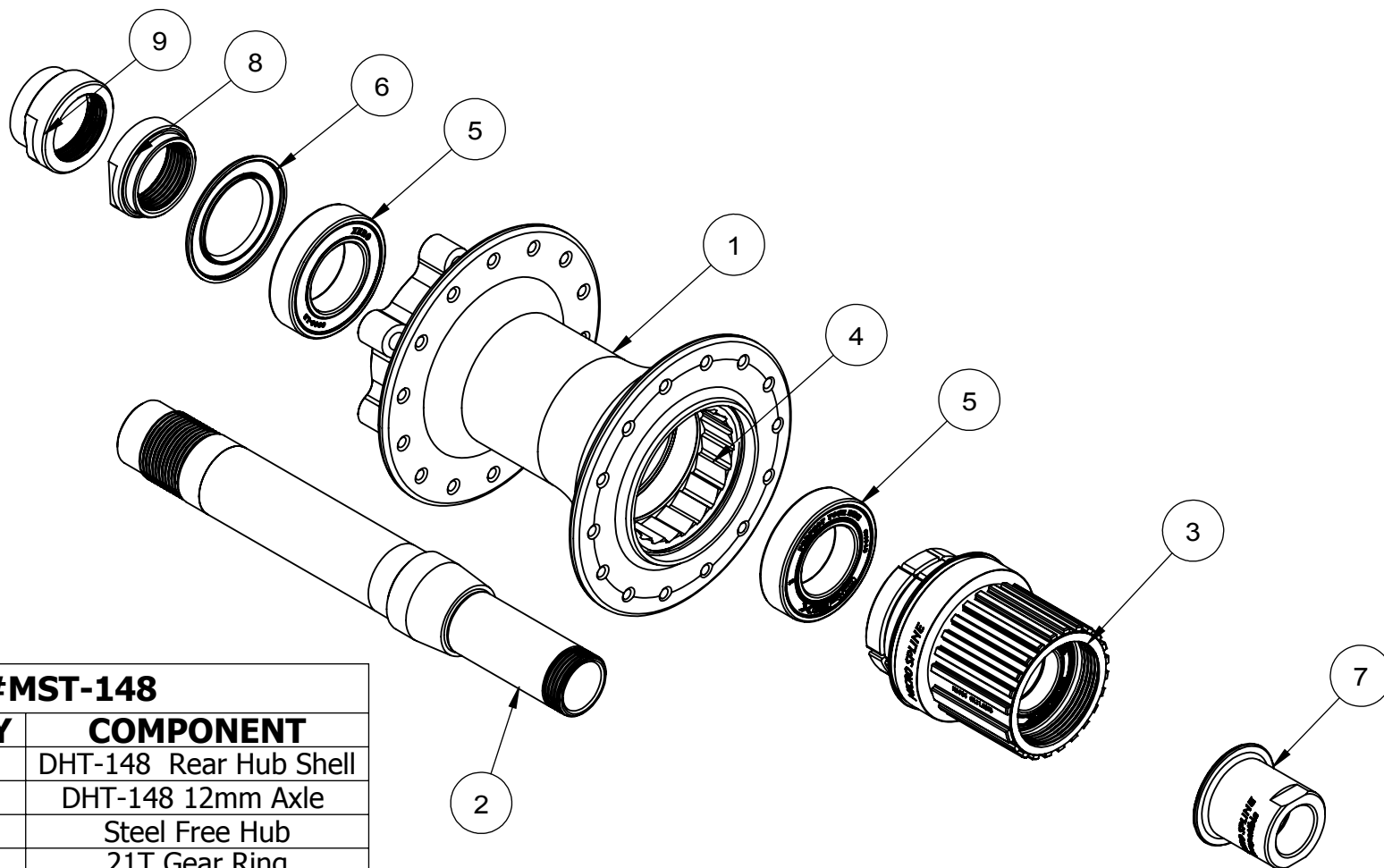
2020/2/27

## DATE

2020/2/27

## DATE

2020/2/27

**MODEL: #MST-148**

PN	FORMULA PN	Q'TY	COMPONENT
1	CNC-R-0562	1	DHT-148 Rear Hub Shell
2	AXLE-0438	1	DHT-148 12mm Axle
3	FH-904A	1	Steel Free Hub
4	DWG-0753	1	21T Gear Ring
5	SB-6903	2	Hope 6903H (30x17x7)
6	DWG-0131	1	Ø 30.6 培林油封
7	DWG-1401	1	FH-904 hub end nut
8	DWG-0830	1	M17x1.0 Nut
9	DWG-0829	1	M17x1.0 Nut


**FORMULA  
ENGINEERING INC**

DRAWING FILE	MST-148	STATE 已發行
DESCRIPTION	4SB Rear hub For Micro Spline	REV. 0

## FILE DESCRIPTION

## STATE DATE

2020/2/27 下午 04:47:34

## FINISH

Anodized

## MATERIAL

Assembly

## HEAT TREATMENT

-

## WEIGHT

393.23g

Revision Change

Basic Dimension

(XX.X) Reference Dimension

UNIT

MM

THIRD ANGLE PROJECTION

Revision Change

Basic Dimension

(XX.X) Reference Dimension

UNIT

MM

THIRD ANGLE PROJECTION

 DIMENSIONS  
ARE GIVEN IN  
MILLIMETERS  
UNLESS  
OTHERWISE  
STATED

 X±0.5  
X.X±0.2  
X.XX±0.05  
ANGLES ±1/2°

## DESIGNER

Sinya Chang

## ENGINEERING

Alex Chang

## ENGINEERING MANAGER

Ted Wang

## DATE

2020/2/27

## DATE

2020/2/27

## DATE

2020/2/27